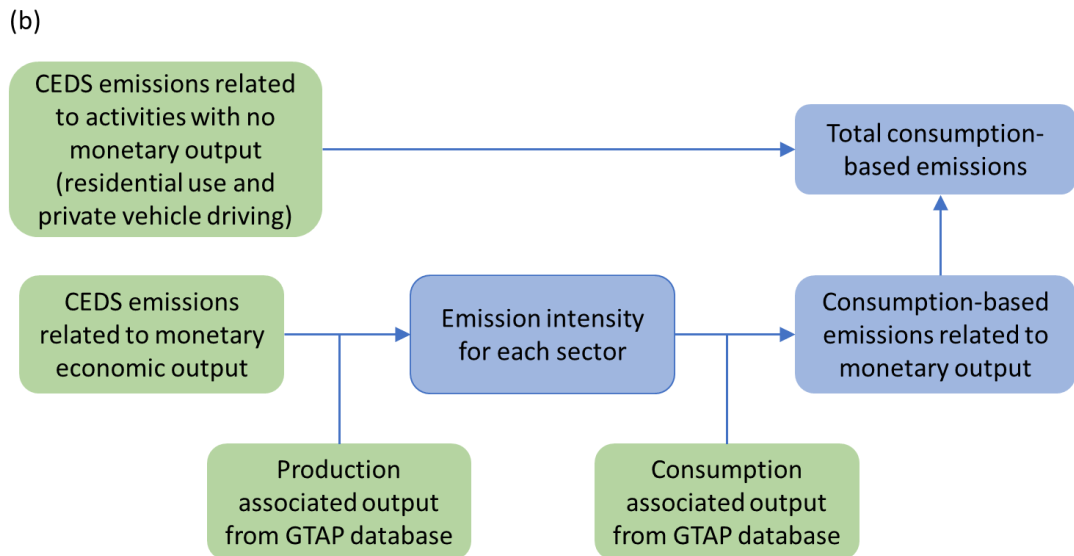
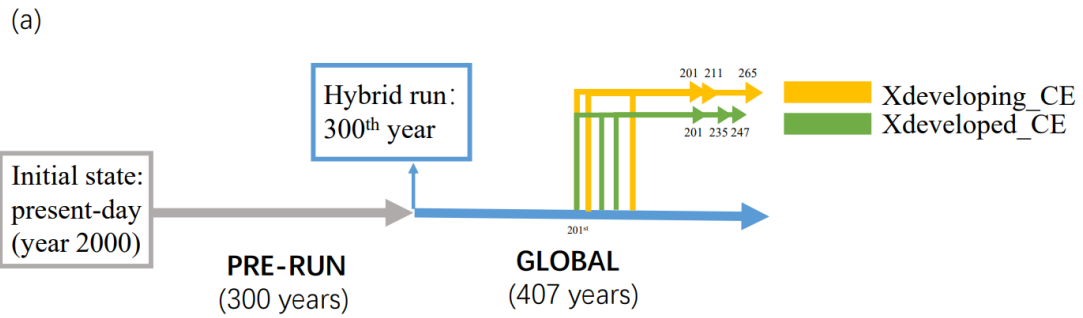


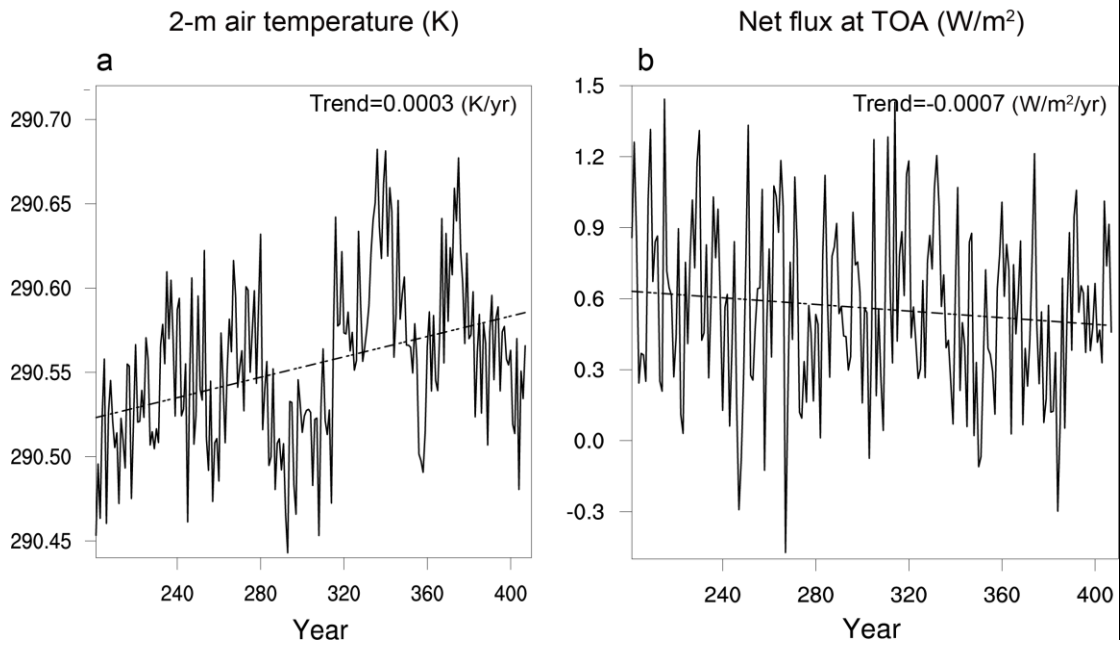
Supplementary information

Sulfur emissions from consumption by developed and developing countries produce comparable climate impacts

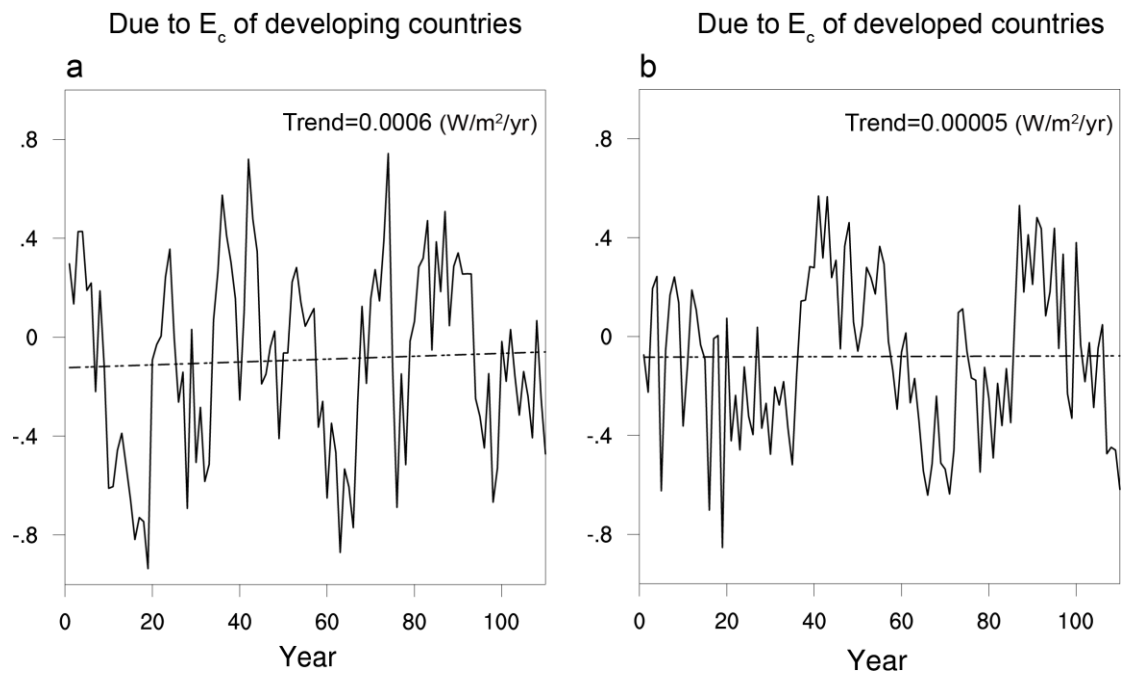
In the format provided by the authors and unedited



Supplementary Figure 1: Experiment setting (a) and consumption-based emissions calculation (b). Here, the output of each sector refers to production to support both the final consumption of that sector and the intermediate consumption by other sectors worldwide.



Supplementary Figure 2: Evaluation of climate equilibrium. Time series of global average annual mean 2-m air temperature and TOA net radiative flux (shortwave + longwave) during the last 207 years of GLOBAL. Linear fit with trend is provided in each panel.



Supplementary Figure 3: Evaluation of climate equilibrium after perturbation. Time series of global average annual mean TOA net radiative flux (shortwave + longwave) during the last 110 years of fully coupled simulations perturbed by consumption-based emissions (GLOBAL minus $X_{\text{developing_CE}}$ and GLOBAL minus $X_{\text{developed_CE}}$). Linear fit with trend is provided in each panel.